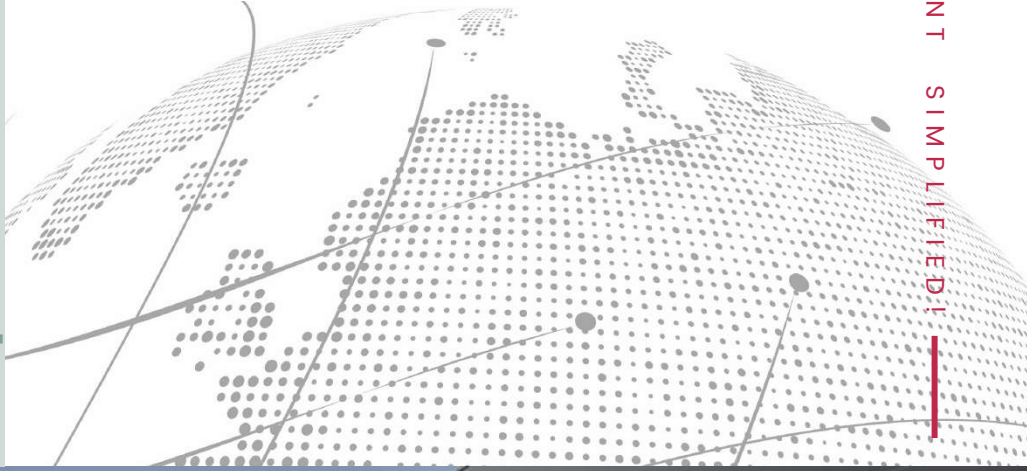


Pro Compactor

WASTE MANAGEMENT SIMPLIFIED

NEW
ERA IN

WASTE
MANAGEMENT



PRODUCT CATALOG

Certified & Customized
Solutions



CONTACT

Office : 35800 Aliağa/İzmir Turkey

Factory: Evrenköy Cd. 42250/Konya, Turkey

2022

www.procompactor.com  info@procompactor.com

Welcome to ProCompactor

Waste Management Simplified!

ProCompactor provides a variety of superstructure equipment and vehicles for the waste management industry. Procompactor was established in 2005 in Izmir city of Turkey as one of the first Refuse Truck Manufacturer in Turkey. It has then moved its production to Konya City for a better production facility thus started production for a variety of other superstructures and municipal equipment.

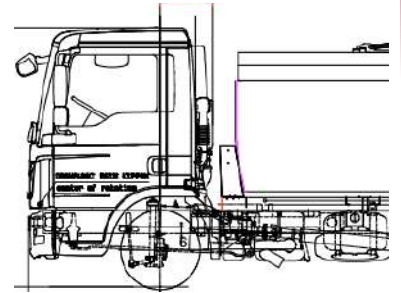
We move 20 years of experience in the production of superstructure equipment for waste management into the international arena with ProCompactor brand. With our team of experienced and qualified team of production, we aim to introduce our practical products and quality to municipalities and private waste industry companies. We ship our equipment worldwide such as South America, North Africa, Europe, and Asian Countries.

What we offer:

- Reliable Service
- On-time projects,
- Assistance on installations
- Spare parts supply for Equipment
- Remote Emergency Assistance within 24 hours of the event.
- Technician Service within 3 days of the event to worldwide clients

ProCompactor comes on stage by providing the following types of equipment such as:

- Garbage Trucks, Refuse Garbage Trucks
- Vacuum Tanker, Vacuum Trucks
- Combi Jetting Vehicles, Sewer Cleaning Vehicles
- Canal Jetting Trucks,
- Hooklifts, Hook Loaders, Skip Loaders
- Telescopic Aerial Platforms, Crane Mounted Vehicles
- Road & Street Sweepers
- Fire Fighters & Rescue Vehicles
- Beach Cleaning Vehicles
- Tractor towed equipment for cleaning streets



WHO WE ARE

Certified & Customized Solutions



CERTIFICATIONS

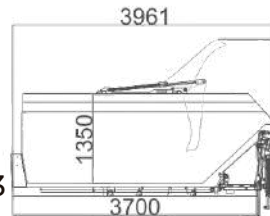


Pro
Compactoro

WASTE MANAGEMENT SIMPLIFIED!



- TS EN 1501-1+A1:2015, TS EN 12100:2010
- TS 18001 -2014
- TS EN ISO 140001-2015
- TS EN ISO 12100:2010, EN 1028-1-A1, EN 1846- 1/2/3
- (Machinery Directive 2006/42/EC)
- TS EN 1501-1+A1:2015, TS EN 12100:2010 (2006/42/EC
- Machinery Directive /EK IV)
- TS EN 14043:2014
- TS EN 12100:2010
- TS EN ISO 9001 :2015
- TS EN 1777 :2012



CERTIFICATIONS

Certified &
Customized
Solutions



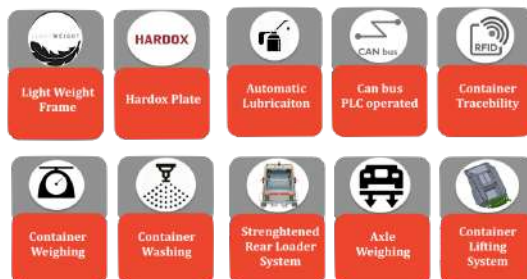
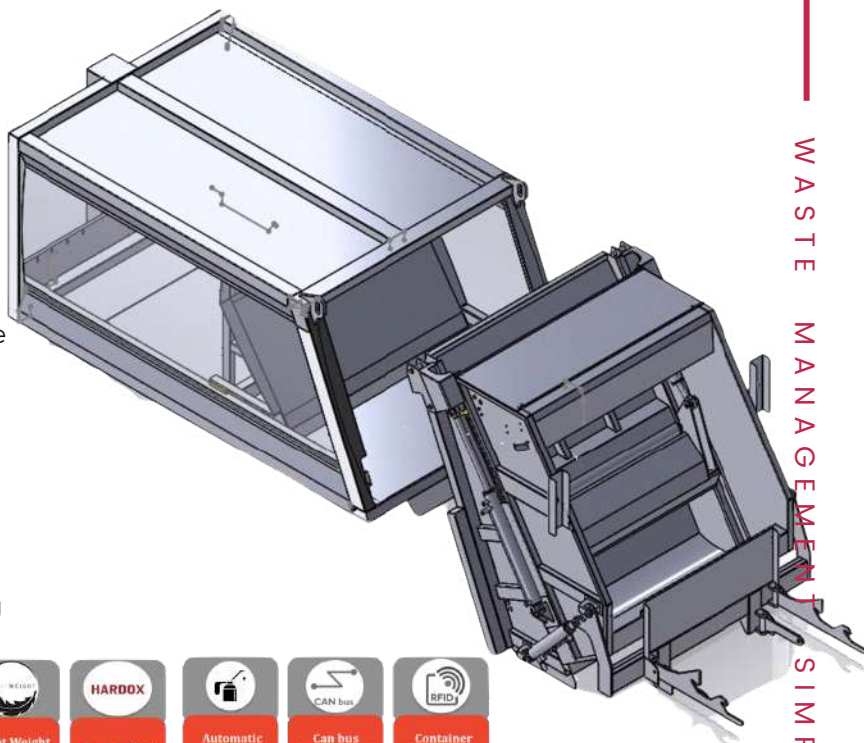
WASTE MANAGEMENT SIMPLIFIED!

You name it, we build it!

We build refuse truck superstructure from **6 cbm** up to **65 cbm**

Procompactor Rear Loader Garbage Collection Trucks are designed to load municipal solid wastes and compact the waste within the vehicle superstructure thus avoiding long-range travel for little wastes and transporting them to waste treatment facilities.

- Refuse Compactor / Rear Loader Garbage
- Monoblok Type Garbage Compactor Equipment
- Garbage Compactor with Container Washing System
- Hybrid Type Garbage Compactor
- Crane-Mount Garbage Truck for Under Ground Containers
- Custom-built Design



WASTE MANAGEMENT SIMPLIFIED!

GARBAGE TRUCK

Certified & Customized Solutions

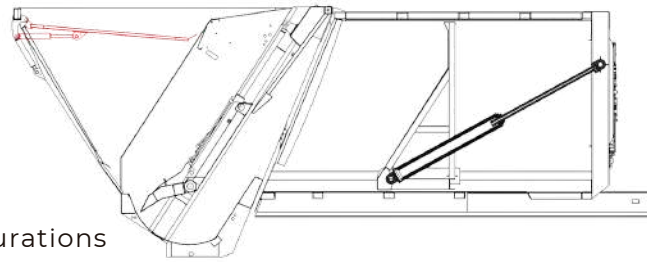




**Pro
Compactor**

**WASTE
MANAGEMENT
SIMPLIFIED!**

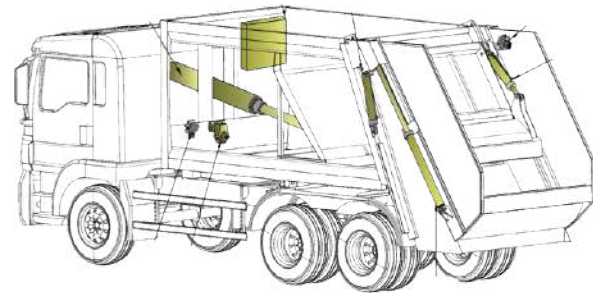
ProCompactor Waste Management Equipments provide most chassis configurations with additional features.



Depending on truck size there is a variety of chassis configurations and loading volume offered to fit the necessities of regions or workplaces

Variety of Refuse Compactors Procompactor Supply:

- Automatic Garbage Compactor Trucks & Equipment
- Hardox Body for Superstructure upon request
- Specific Design Compactors
- Mini Garbage Compactors
- Crane Mounted Garbage Compactor Equipments
- European Type Fully Optional Sensors installment types
- Container Washing Type Garbage Equipments



Optional Configurations



GARBAGE TRUCK

Certified & Customized Solutions

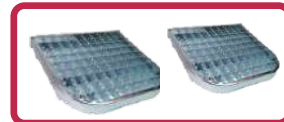
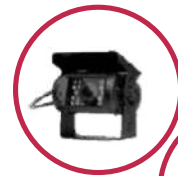


WASTE MANAGEMENT SIMPLIFIED!



Accessories

- Camera + Screen Monitoring
- Working light mounted on the tailgate for lightning working area
- Side bicycle protection bar/barrier included
- One elliptical handle at each side ¾ " pipe handle for the crews to grasp
- Plastic mudguards included
- Two units foldable, anti-skidding and Height adjustable type rear footboards for the crew to stand on
- Hydraulic pump (with pressure and suction hose)



- Emergency Stop Button
- Automatic Garbage Compression
- Stop Button
- Continuous or Single Loop Selection Button
- RPM Increase Button
- Driver Alert Button

GARBAGE TRUCK

Certified & Customized Solutions





Pro Compactor

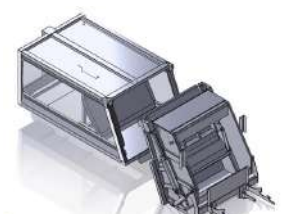
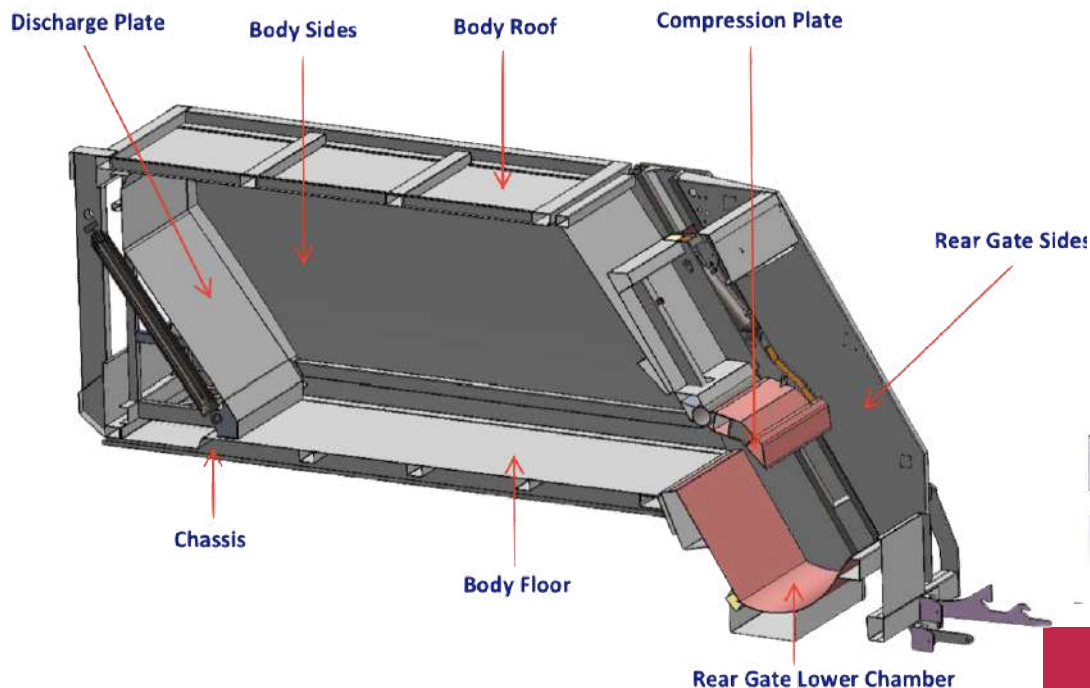
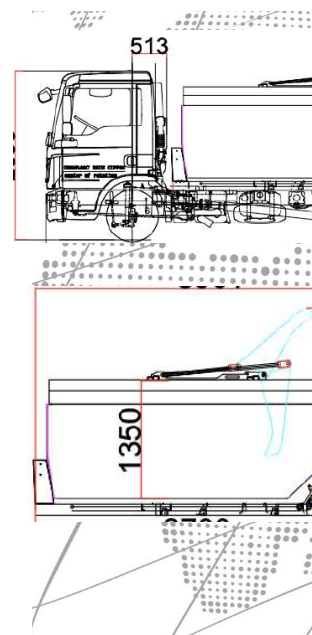
WASTE MANAGEMENT SIMPLIFIED!

Sheet Thicknesses By Equipment Volume

Truck Type

4x2 , 4x4 , 6x2 and 6x4or equivalent

Body Volume	6 m3 - 8 m3	6 9 m3 - 12 m3	13 m3 - 16 m3	18+2 m3 - 25+2 m3
Rear Gate Volume	0-8 m3 - 1 m3	1,2 m3	1,5 m3	2 m3
Chassis	5 mm St-52	6 mm St-52	8 mm St-52	8 mm St-52
Body Floor	3 mm St-52	4 mm St-52	5 mm St-52	5 mm St-52
Body Sides	3 mm St-52	4 mm St-52	4 mm St-52	4 mm St-52
Body Roof	3 mm St-52	4 mm St-52	4 mm St-52	4 mm St-52
Discharge Plate	3 mm St-52	4 mm St-52	4 mm St-52	4 mm St-52
Compression Plate	5 mm St-52	6 mm St-52	6 mm St-52	6 mm St-52
Rear Gate Lower Chamber	5 mm St-52	6 mm St-52	6 mm St-52	6 mm St-52
Rear Gate Sides	4 mm St-52	4 mm St-52	4 mm St-52	5 mm St-52



Garbage Body Hydraulic Specification

Hydraulic Pump	36 - 90 cm3/d (cm3/rev)-max
Working Pressure	170 - 190 bar
Oil Tank	100 - 160 LT
P.T.O.	750 d/d (rpm) - 1500 d/d (rpm)
Cycle Time	20 - 35 sn (sec.)
Working Type	Automatic + Manuel
Hydraulic Cylinder	11 units hydraulic cylinder ; Telescopic Cylinder with 2 or 4 extensions. All the Hydraulic Cylinders are double-acting cylinder.

GARBAGE TRUCK

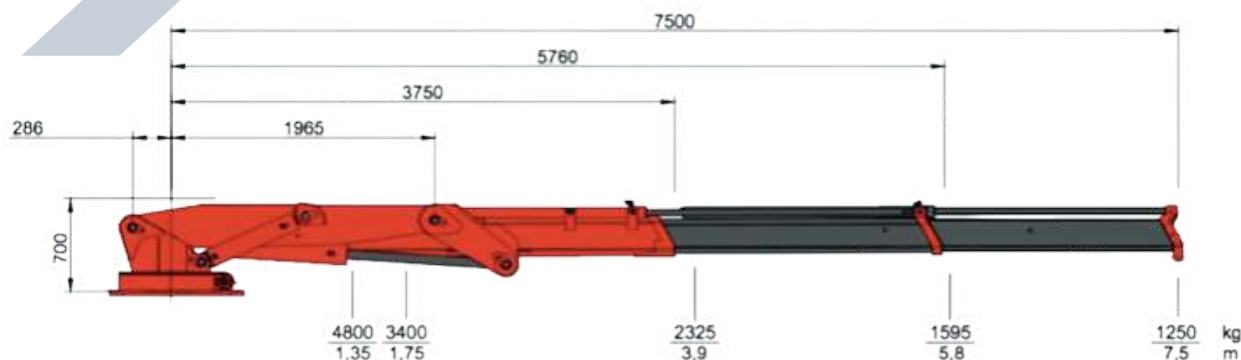
Certified & Customized Solutions



WASTE MANAGEMENT SIMPLIFIED!



Crane Specs



- Roof Installation on Garbage Truck body.
- Compact and lightweight
- Solutions-oriented for larger body capacity.
- Attachments for all container systems
- Electronic Moment Control System
- Digital Multifunctional Distributor Bank
- Radio Remote Control
- Stability Control System
- Rotation Arc Limiter
- EN:12999:A2



CRANE MOUNT GARBAGE TRUCK

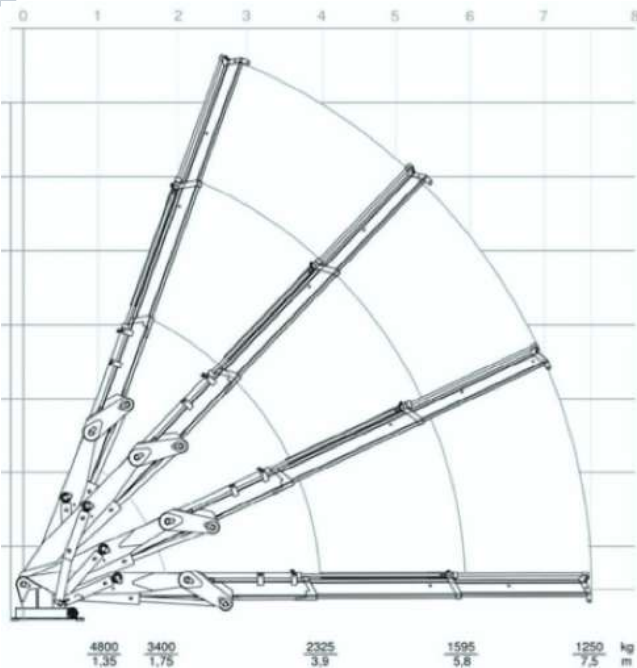
Certified & Customized Solutions



Pro
Compactor

WASTE
MANAGEMENT
SIMPLIFIED!

Crane Operation



Pro Compactor Specs	
LIFTING CAPACITY	9.7(ton.m)
STANDARD REACH	7500 (mm)
HYDRAULIC EXTENSION	3600 (mm)
ROTATION	330°/ degree
ROTATION TORQUE	42.8(Kn.m)
WORKING PRESSURE	175 (bar)
PUMP CAPACITY	56(lt.dk)
DEAD WEIGHT	1350(kg)
WIDTH	920(mm)
LENGTH	4400(mm)
HEIGHT	700(mm)



**CRANE
MOUNT
GARBAGE
TRUCK**

Certified &
Customized
Solutions



WASTE MANAGEMENT SIMPLIFIED!



Telescopic Aerial Platforms

Standard Features

- 70000V Insulated Fiberglass Basket
- Or Aluminium Basket
- Automatic Basket Leveling
- Lighting on Basket
- Engine Start/Stop System (Vehicle dependent)
- Electronic Card Controlled Operation
- Proportional Joystick Controller
- Buzzer
- Basket and Turret Control Panels
- Rotating beacon on Turret
- All-terrain Outrigger Swivels
- Non-slip Body
- Toolbox (2 pieces)

Safety Norm

- TS-EN 280 + A1 / CE Conformity
- Emergency Bypass® System
- Emergency Stop Buttons on Control Panels
- Pressure Holding Valves and Interlocking Valves against Hose Blasts
- High Pressure Relief Valve
- Emergency Descend Hand Pump

Optional Accessories

- Simultaneous Commands Execution (Full proportional)
- Automatic One-button Platform Leveling
- Fly Boom*
- Fly Boom Rotation (180° Horizontal)
- Tilt Sensor
- Basket Load Cell
- Extra Basket Capacity
- Basket Rotation
- Anemometer on Basket
- 110V/220V/380V Socket in Basket
- Aluminium Basket
- Steel Basket
- Toolbox in Basket
- Base-Basket Radio Communication
- Continuous Turret Rotation
- Operator Seat
- Operator Cabin
- Hydro mechanical Control System
- Wireless Remote Joystick Controller
- Emergency Descend DC Powerpack
- External AC Powerpack
- Special Paint Color
- Additional Lighting
- Non-slip Aluminium Body
- Additional Toolboxes (+2)



TRUCK MOUNT AERIAL PLATFORM

Certified & Customized Solutions



WASTE MANAGEMENT SIMPLIFIED!

We Build 14 mt up to 54 mt Telescopic Platform

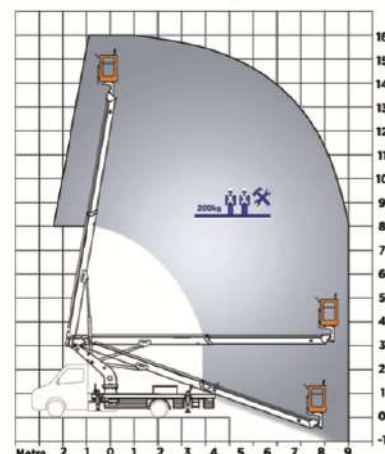
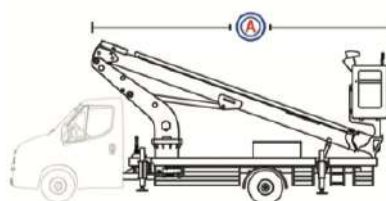
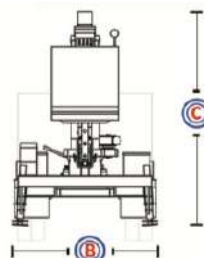
Truck-Mounted Articulated Aerial Platform is a type of crane that has been designed with the purpose of minimizing safety hazards and environmental impacts by lifting loads at a fixed elevation. Telescopic aerial platforms, in particular, are created to allow companies to meet safety and regulatory requirements since they offer significant improvements over traditional boom cranes in terms of stability and control. Telescopic aerial platforms work by extending telescoping booms from forks or lugs mounted on the platform base. The instability of the ground surface causes problems for construction teams. Telescopic aerial platforms are used for work at heights, including the installation of roofing products, chimneys, and antennas on buildings. Construction teams use telescopic aerial platforms to install roofing products, chimneys, and antennas on buildings at height.

TECHNICAL DATA

16

Operating Height	16 m
Platform Height	14 m
Lateral Outreach	9 m
Turret Rotation	270°
Basket Capacity (kg)	200 kg
Basket Dimensions	750 x 1000 x 1100 mm
Stowed Height	3140 mm
Stowed Length	6215 mm
Stowed Width	2185 mm
Width Outriggers Extended	2680 mm
Control System	Electronic Proportional Joystick
Weight	2400 kg

(C)
(A)
(B)



TRUCK MOUNT AERIAL PLATFORM

Certified &
Customized
Solutions





Combi Jetting and Vacuum Vehicles (JetVac)

- Waste Water Capacity
- Vacuum Pump
- High-Pressure Pump
- Tank Material
- Divided Tank
- Main Hose Reel
- Rear Cover Opening
- Rear Door Locks
- Cabinets
- Valves
- Clean Water Capacity
- Depend on request
- Jurop / Moro / Battioni Pagani brands accordingly with power required
- Pratisoli / brands accordingly with the power required
- Carbon Steel ST52 or Equivalent
- Acceptable capacity for the required vehicle
- 3/4" diameter hose for the desired length
- Hydraulic / Mechanical
- Hydraulic / Mechanical
- 2 on both sides of the tank - customizable
- 4" Mechanical Filling 6" pneumatic discharge / or desired specs required
- Depend on client request



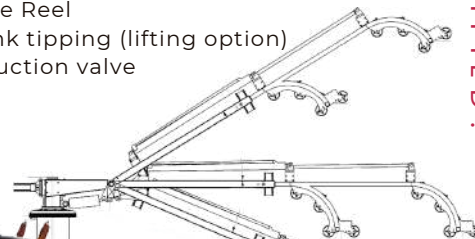
Split Box - Transfer Case



- 3000 KGM Horizontal Heavy Duty PTO designed with the Clutch Mechanism and to provide Hot Shift Feature. With a clutch mechanism no need to press the clutch pedal during Engage/Disengage process.
- UARA.2400 takes power from the main shaft to make equipment function.

Optional Accessories

- Rotatable 270° Suction boom
- Hose drum Cassette type
- Stainless Steel Tank
- Additional water tank made of stainless steel
- Hydraulic tailgate locks
- Hydraulic - Electric crane
- Tank discharge with pressure
- Auxiliary Hose Reel
- Hydraulic tank tipping (lifting option)
- Pneumatic suction valve



COMBI JETTING & VACUUM

Certified & Customized Solutions



WASTE MANAGEMENT SIMPLIFIED!

Pumps



High Pressure

- CONSTRUCTION
- High-pressure plunger pump, available in 3 versions.
- Low-high pressure packing design with the integrated cooling system. → Vertically arranged suction/delivery valves
- Splash lubrication.
- External gearbox positionable on the left or right side of the pump.
- Drain valve kits

Vacuum

- Some Applications for Q Series Blower
- Pneumatic transport of granular materials with dilute phase (vacuum)
- Your Projects-Canva
- Central dust collection systems (vacuum)
- Central milking machines (vacuum)
- Central vacuum applications (vacuum)
- On-board equipment applications (Sewer truck) (vacuum)

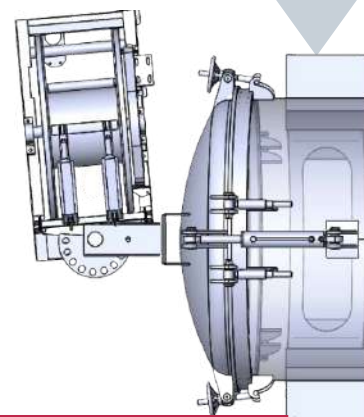
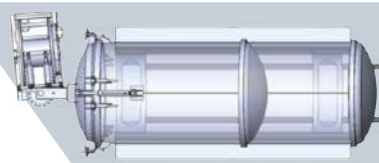


Combination sewer jetting and vacuum vehicles include a positive displacement vacuum pump and a high-pressure water pump. Jetting and vacuuming vehicles are installed with a self-contained water supply as the water source for the high-pressure pump and a cylindrical debris tank for the collection of materials vacuumed from the sewage.

These vehicles are able to perform high-pressure flushing of sewer pipes and removing of solid and liquid waste from the sewer manholes. Combi jetting & Vacuum Equipment can be used with both functioning features or separately depending on incidents.



TIPPING



COMBI JETTING & VACUUM

Certified & Customized Solutions





Road Sweepers

General Features

- Garbage hopper installation in the desired volume on a suitable carrier vehicle between 4 m³ and 10 m³.
- With the 115 HP auxiliary engine, which is used as a standard in all superstructures we offer, the power required for vacuum is obtained at lower revs, thus providing fuel savings and a quiet operation.
- Thanks to the stainless water tank placed on the bottom of the garbage can with a 10% slope, easy garbage disposal is possible.
- The easy-to-understand and ergonomic control panel allows the operator to fully control the equipment during use.
- Thanks to the fiber cover on the right and left sides, auxiliary engine maintenance, malfunction, etc. fast and practical solution without having to remove the superstructure in interventions.
- Thanks to the high-pressure water pump used as a standard, more efficient irrigation is provided, while the optimum consumption level has been achieved with less water consumption.
- The camera system helps the operator watch the operations taking place
- User-friendly panel to operate
- Portable Remote Controller

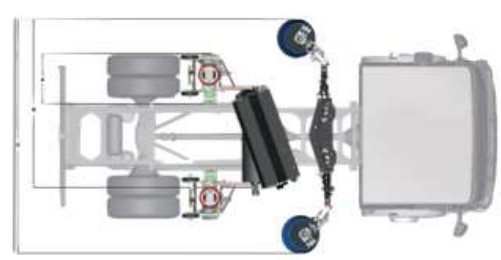


Capacity up to 10m3

	3.5m ³	4.5m ³	5.5m ³	6.5m ³	7.5m ³	9.5m ³
A	750 mm	750 mm	750 mm	750 mm	750 mm	750 mm
B	2150 mm	2150 mm	2300 mm	2450 mm	2450 mm	2450 mm
C	3200 mm	3200 mm	3500 mm	3200 mm	3200 mm	3200 mm

ROAD SWEEPERS

Certified & Customized Solutions



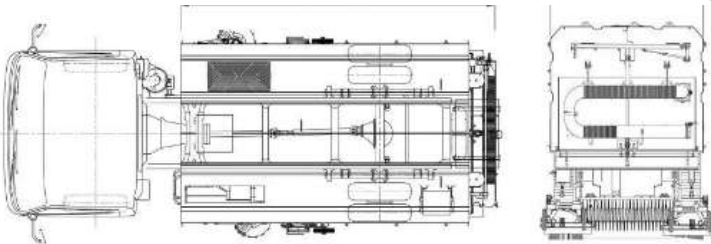


**Pro
Compactor**

**WASTE
MANAGEMENT
SIMPLIFIED!**

Additional Features

- Additional Water Tank
- Additional Tool Cabinet
- Stainless Steel Body
- High Pressure Road Washing System
- Front Brushes
- Simultaneous Two Sided Suction
- Front Magnet
- Replaceable Chassis



WASTE
MANAGEMENT
SIMPLIFIED!



ROAD SWEEPERS

Certified &
Customized
Solutions



www.procompactor.com

info@procompactor.com

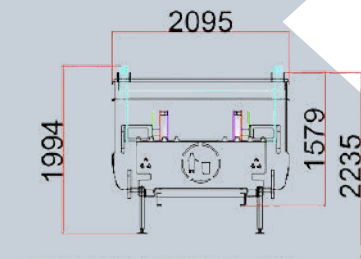
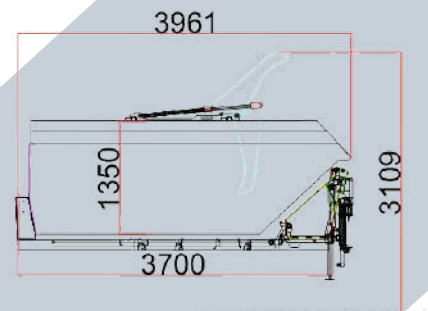
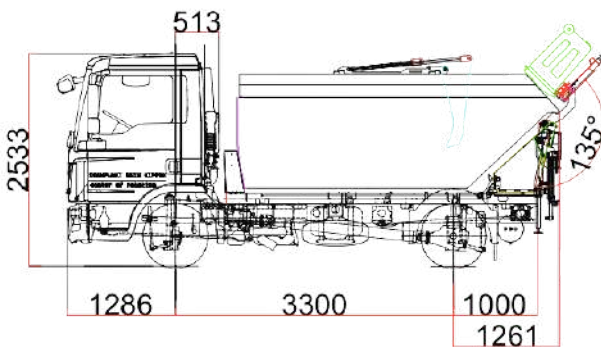
WASTE MANAGEMENT SIMPLIFIED!



Mini Packer Garbage Compactor

General Features

- Body volume : 3-6m³
- Waste Carrying capacity : 500-1500 depending on truck
- Equipment weight : 950-1250 kg
- Steel sheet type : ST-37/ ST 52 Compaction rate: 1:11:3
- Control system : Automatic, Manual
- Container lifting: : 120-240-360-1100 lt It
- Working pressure : 150-180 bar
- Outriggers : Hydraulic, 2pcs, at rear
- Discharging to rear loading
- Garbage compactor vehicle: Comply



- Minipacker, especially for use in narrow areas. is very useful and light with its simple electrical equipment.
- It can be mounted on trucks with a carrying capacity of 5 tons 7 tons and Electrical Vehicles.

WASTE MANAGEMENT SIMPLIFIED!

MINI PACKER GARBAGE COMPACTOR

Certified & Customized Solutions



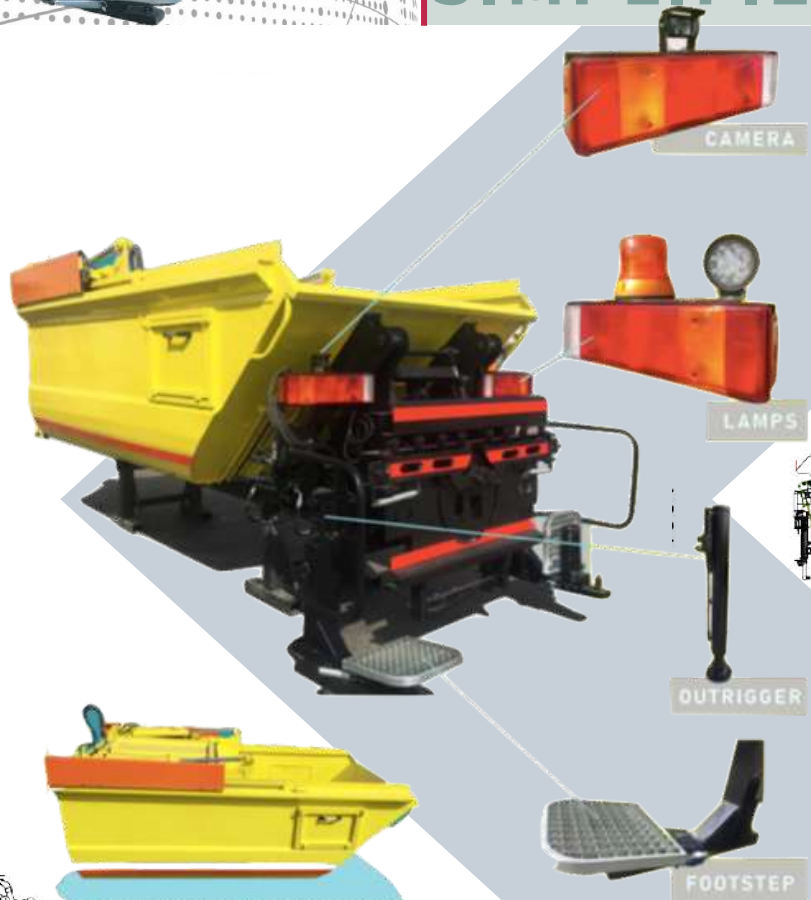
- Mini Packer Garbage Compactor is mounted on 4x2 truck chassis to collect street waste in narrow streets, the power of the system will be supplied through the PTO of the chassis and hydraulic pump of the superstructure
- Body: Body wall: 2.5 mm thickness St 37 material Body floor: 4 mm thickness St 37 material Capacity: 6 cbm Compacting ratio: 3:1 Body is made of single steel plate floor steel plates with u-profiles at the sides. Side protections on both sides. Control panels of the superstructure operators the right and back. Manual and automatic operation. Left and right steps for operators
- Slide&Shovel: The shovel is mounted on the top of the rear end of the body contacted with the slide which is moving horizontally by means of two double-acting hydraulic cylinders from rear to front, the shovel is moving radially by means of two double-acting hydraulic cylinders. The shovel will collect and push the garbage to the front by pressing

Pro Compactor

WASTE MANAGEMENT SIMPLIFIED!

Additional Features

- Hydraulic installation: Hydraulic pump is powered by PTO which is mounted on the gearbox of the chassis. There will be a hydraulic oil tank with filters, levels, and temperature gauges. The movements controls will be done manually with buttons and automatically. Working pressure – 170bar Oil tank – 60liter
- Container Lifting System: Accordance with EN 1501-1-2015
- ACCESSORIES:- Beacon lamb
- Projector for night work
- Reflective stripes
- Manual for operating, maintenance, and spare part – left and right side guards of the vehicle



Because of the monoblock type the waste water does not leak out.

MINI PACKER GARBAGE COMPACTOR

Certified &
Customized
Solutions



WASTE MANAGEMENT SIMPLIFIED!



Skip Loader

Capacity: 6 ton to 25 ton

Technical Specifications

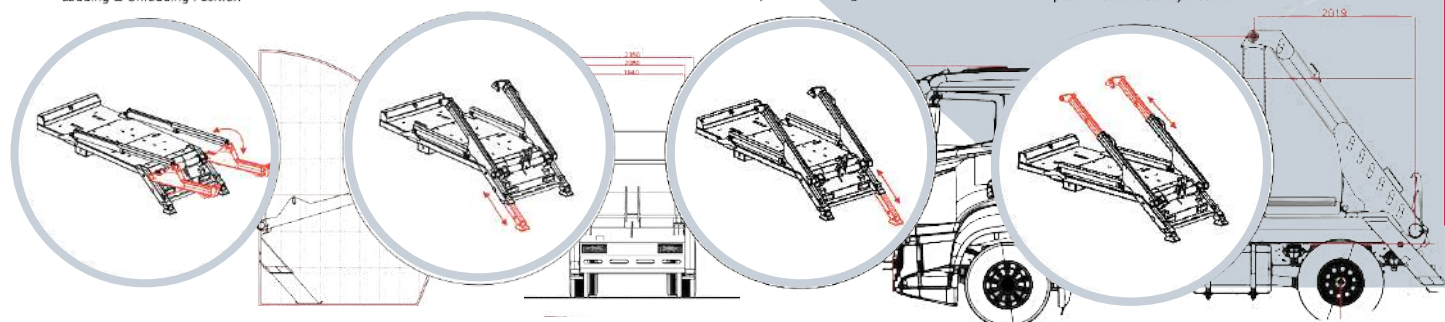
6 Tone	8 Tone	12 Tone	16 Tone
Unloading Capacity (Container Included) : 6.000 Kg. Lifting Capacity (Container Included) : 6.000 Kg. Gross Weight : 1.860 Kg. Hydraulic Pump : 65 cc Piston P. Max. Pressure : 220 Bar Oil Tank Capacity: 60 Lt.	Unloading Capacity (Container Included) : 8.000 Kg. Lifting Capacity (Container Included) : 8.000 Kg. Gross Weight : 2.840 Kg. Hydraulic Pump : 65 cc Piston P. Max. Pressure : 220 Bar Oil Tank Capacity: 70 Lt.	Unloading Capacity (Container Included) : 12.000 Kg. Lifting Capacity (Container Included) : 12.000 Kg. 3800 Gross Weight : 2.950 Kg. 4200 Gross Weight : 3.050 Kg. 4600 Gross Weight : 3.150 Kg. Hydraulic Pump : 85 cc Piston P. Max. Pressure : 220 Bar Oil Tank Capacity: 80 Lt.	Unloading Capacity (Container Included) : 16.000 Kg. Lifting Capacity (Container Included) : 16.000 Kg. 3800 Gross Weight : 3.050 Kg. 4200 Gross Weight : 3.150 Kg. 4600 Gross Weight : 3.250 Kg. Hydraulic Pump : 85 cc Piston P. Max. Pressure : 220 Bar Oil Tank Capacity: 100 Lt.
Pump, Monoblock Valve and Oil Tank is included to SkipLoader price. All Cylinders produced with St-52 Cold Drawn Matreial			

- Loading & Unloading Position

- Open & Close Leg

- Open & Close Leg

- Open & Close Telescopic Arms



General Features

- Procompactor skip loaders are developed and designed to carry containers of non-compactable solid wastes.
- It has a structure with extension arms that can also be modified.
- Stabilizing arms on the loader shall be manufactured horizontal or vertical depending on the state of the load. Six hydraulic and pneumatic cylinders support the hook holding systems available on the equipment.
- Skip Loaders are usually smaller vehicles, often smaller than a standard car. The arms that control the shovel come forward from the back of the truck and sit the container onto the vehicle from backward.
- Capacities we supply: 6 ton to 25 ton.

SKIP LOADER

Certified & Customized Solutions



WASTE MANAGEMENT SIMPLIFIED!

Technical Specifications

Truck Model : 4x2 - 6x2 - 6x6
 Wheel Base : Accordingly with chassis
 GVW : 8 ton to 25 Ton
 Arm Design : Octagon Boom Fixed
 Arm Lifting Capacity : depend on chassis

Lifting Cylinder : Depend on Chassis
 Container Locking : Hooklift and Container Locking with pneumatic.
 Chain Lifting : 12 mm Buckle or depend on chassis
 Sheet Metal : Strenx 700
 Landing Leg : 100x120 Pipe, 60 mm Rod - 2 Pcs with hydraulic control

Hydraulic Equipments

- PTO : Available over truck.
- Hydraulic Pump : 80 CC Bentaxis Piston Pump
- Valve : 4P 120 Lt Mechanical Sectional
- Oil Tank : 120 Lt or depend on chassis

Control

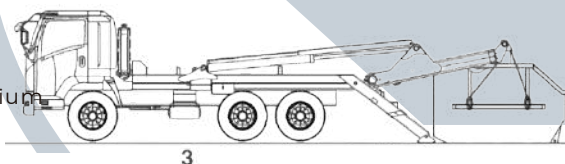
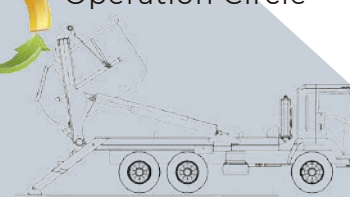
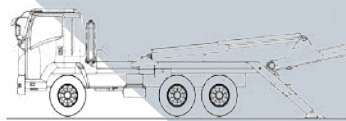
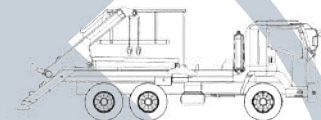
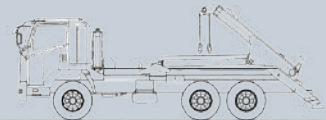
- Control : Mechanical Control With Directional Valve
- Remote Control (Optional)

Accessories

- Mudgard Set : 1 Set
- Lateral Support : Both Side 2500 mm x 4 pcs Aluminium profile.
- Reflektor Stickers : Sides Yellow, back is red.
- Paint : 2 Layers Primary, 2 Layers Acrylic

Warranty

- 12 Months



Operation Circle



SKIP LOADER

Certified &
Customized
Solutions



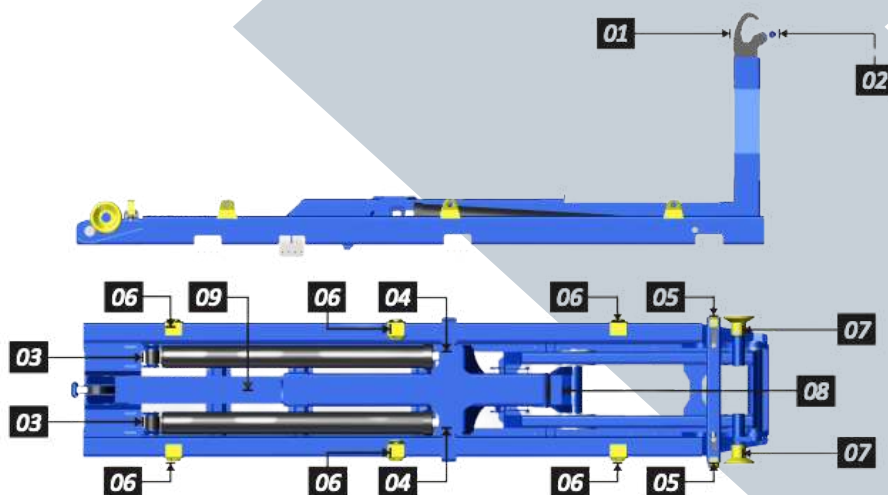
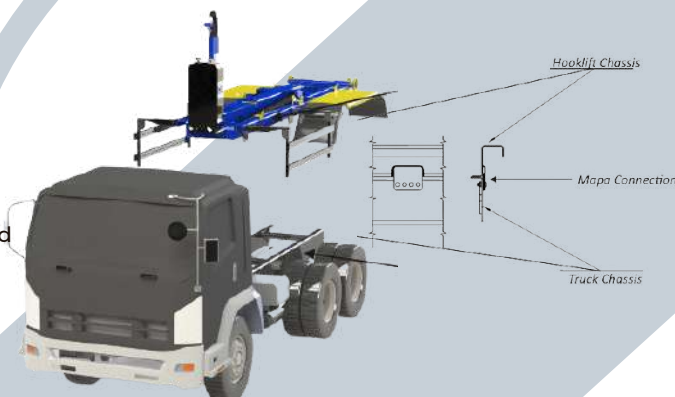
WASTE MANAGEMENT SIMPLIFIED!



Hook Loader

Capacity: 6 ton to 25 ton

- Arm Lifting Capacity : 6 to 20 Ton
- Lifting Cylinder : 150x180 Pipe, 70 mm Rot H8 Honed Pipe and Chromic
- Container Locking : Hooklift and Container Locking with pneumatic.
- Chain Lifting : 12 mm Buckle
- Sheet Metal : S700
- Landing Leg : 100x120 Pipe, 60 mm Rod - 2 Pcs with hydraulic control



NO	TRACK NAME
01	Hook
02	Hook Lock
03	Cylinder Front Bushings
04	Cylinder Rear Bushings
05	Hydraulic Lock Hook
06	Container Beds
07	Container Loading Reels
08	Outer Boom Pin
09	Inner Boom Surface

General Features

- Procompactor hook loader lifting equipment designed for movable containers. We offer a variety range of hook loaders for removable skips.
- Hooklift is designed for loading and transporting the containers by moving the container and lifting it onto the chassis of the vehicle thus completing the cycle of loading for secure moving. Mainly used for industrial and larger construction sites.
- Our hook loaders have an angular overturning feature enabling the discharge of the loads within containers.
- Designed accordingly with DIN 30722 norms complying with the superstructure consisting of the subframe, foldable lifting arm, and hydraulic-pneumatic equipment.
- Procompactor provides Hookloader from 8-ton up to 25-ton capacity.

HOOK LOADER

Certified & Customized Solutions



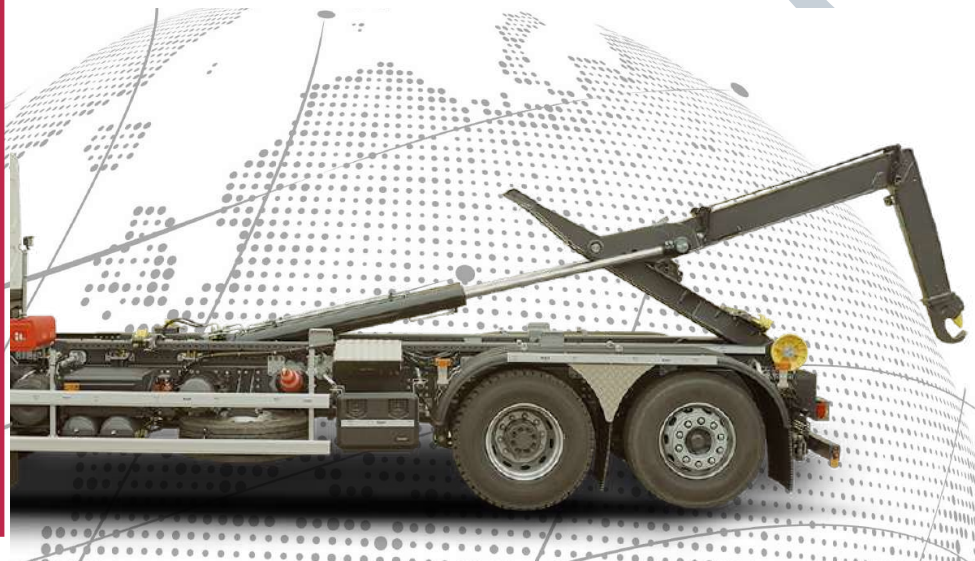
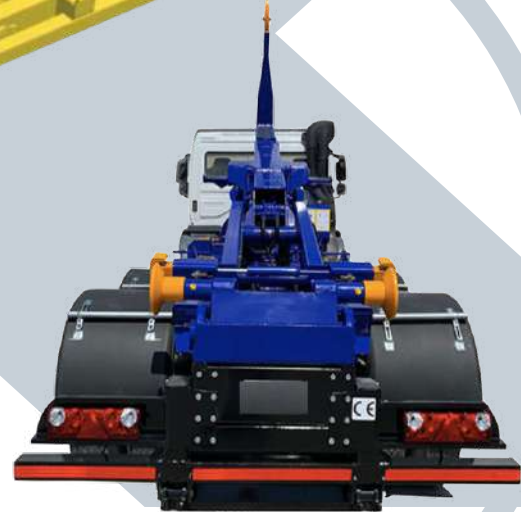
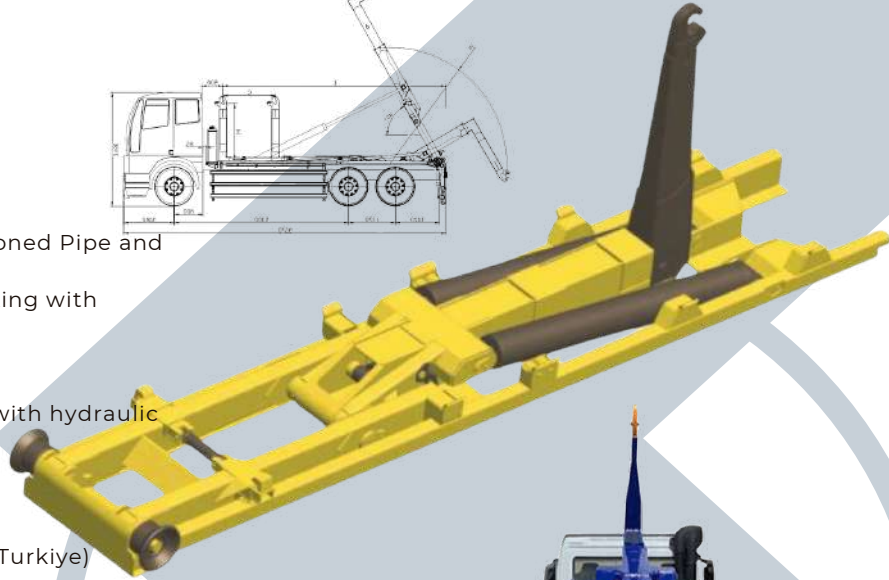
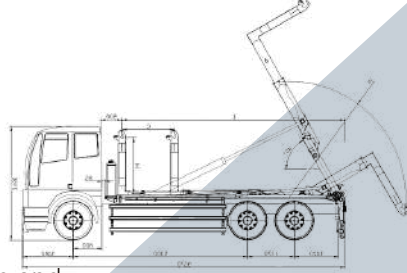


**Pro
Compactor**

**WASTE
MANAGEMENT
SIMPLIFIED!**

Technical Specifications

- Truck Model : 6x4,8X4
- Wheel Base : 5100 mm
- GVW : 32-38 Ton
- Arm Design : Octagon Boom Fixed
- Arm Lifting Capacity : 6 to 20 Ton
- Lifting Cylinder : 150x180 Pipe, 70 mm Rot H8 Honed Pipe and Chromic
- Container Locking : Hooklift and Container Locking with pneumatic.
- Chain Lifting : 12 mm Buckle
- Sheet Metal : S700
- Landing Leg : 100x120 Pipe, 60 mm Rod - 2 Pcs with hydraulic control
- Hydraulic Equipments
- PTO : Available over truck. .
- Hydraulic Pump : 80 CC Bentaxis Piston Pump
- Valve : 4P 120 Lt Mechanical Sectional (Made In Turkiye)
- Oil Tank : 120 Lt
- Control
- Control : Mechanical Control With Directional Valve
- Remote Control (Optionel)
- Accessories
- Mudgard Set : 1 Set
- Lateral Support : Both Side 2500 mm x 4 pcs Aluminium profile.
- Reflektor Stickers : Sides Yellow, back is red.
- Paint : 2 Layers Primary, 2 Layers Acrylic
- Warranty
- 12 Month



**HOOK
LOADER**

Certified &
Customized
Solutions



www.procompactor.com

info@procompactor.com

WASTE MANAGEMENT SIMPLIFIED!

WASTE MANAGEMENT SIMPLIFIED!



Hook Loader

Capacity: 8 ton to 65 ton

- Truck-Mounted Mobile Cranes consist of:
- 1 vertical boom, 1 main boom, 1 breaking boom, 6 hydraulic extensions, and 2 mechanical booms for 10 tons capacity.
- Chestnut and similar bedding reduce wear and friction used between the knuckle boom and telescopic booms.
- Folding boom, telescopic booms (arms) manufactured from high-strength imported OPTIM-PERFORM or STRENX 700 material as Hexagonal (Hexagonal). With this section, max. Strength is provided.

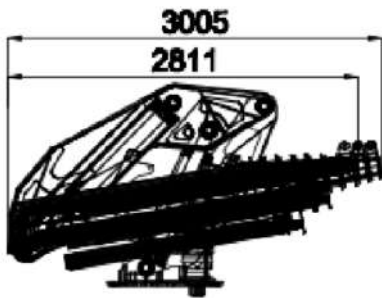
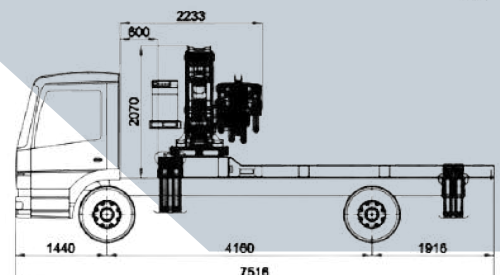
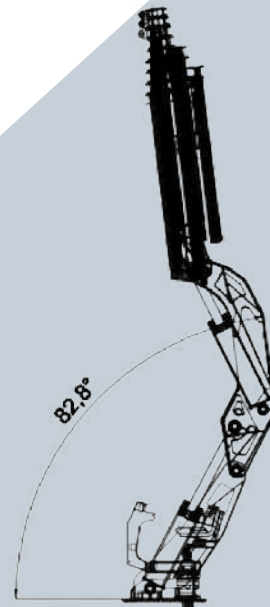
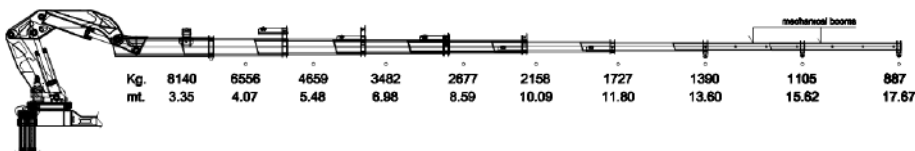


Illustration for 10 ton Crane



WASTE MANAGEMENT SIMPLIFIED!

TRUCK MOUNT MOBILE CRANES

Certified & Customized Solutions



General Features

- Truck-Mounted Mobile Cranes equipment consists of two parts: the truck and the booms (hydraulically operated arms) installed on the chassis. Truck-mounted Cranes in operation move slowly and steadily due to their load carried by the booms and they are supported by counterweights and outriggers for stability during operation.
- Procompactor can produce from 8-ton capacity to 65-ton capacity truck-mounted cranes
- The vertical boom, Main boom, Foot extensions, Folding boom, and Telescopic extension booms of the crane are manufactured from OPTIM-PERFORM or STRENX 700 high-strength imported steel sheet.
-





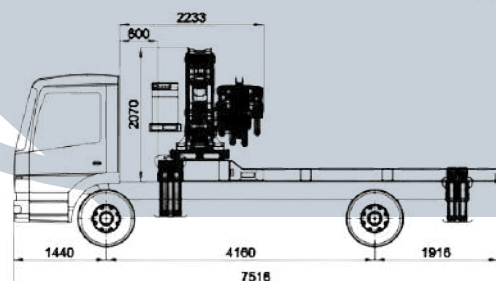
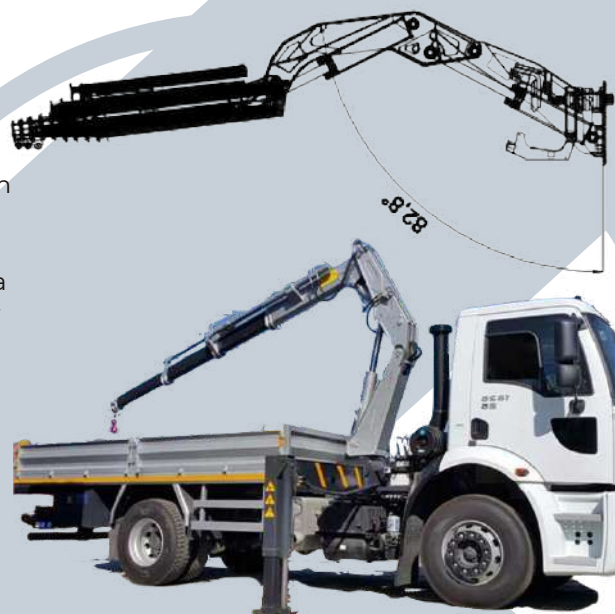
**Pro
Compactor**

**WASTE
MANAGEMENT
SIMPLIFIED!**

Technical Specifications

WASTE MANAGEMENT SIMPLIFIED!

- Detached chassis.
- The feet to be used for the crane and balance will be mounted on the fixed chassis. This chassis is attached to the chassis of the carrier vehicle.
- It will be connected with the help of bolts. In this way, in case of a long-term failure in the carrier vehicle, the machine can be easily disassembled and transferred to another carrier vehicle.
- Since completely imported steel sheets are used, the vehicle's load limit is high.
- **Rotation Group**
- - Rotary table gear, EEC origin planetary reducer, hydro motor, hydraulic brake and hydraulic distributor providing endless rotation will be used.
- - The system have the ability to rotate 360°.
- **Balance Feet**
- - A total of 4 balance legs, 2 horizontal and vertical, 2 vertical hydraulic movable balance legs under the chassis, non-extruding and single-stage pressing. These feet will be mounted on the independent chassis of the crane. During the operation of the crane, the feet will open and step, while the chassis, axle and scissors of the carrier vehicle will not be loaded.
- - Foot extension booms are made of OPTIM-PERFORM or STRENGTH 700 high-strength imported steel sheet, foot booms are precision-welded for bending and torsion, etc. It will be manufactured from high-strength material in the form of rod compression.
- - Imported locking valves used on the retaining legs.



**TRUCK
MOUNT
MOBILE
CRANES**

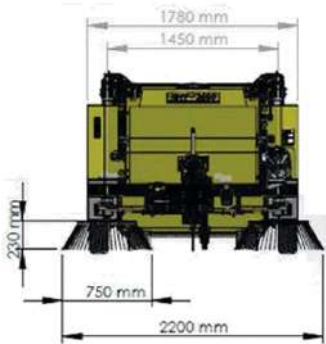
Certified &
Customized
Solutions





Towed-Type Road & Street Sweepers

Towed-type road & street sweepers are designed for heavy works and operate on a mechanical basis and do not work with suction. These types of equipment are ideal for use in small areas and narrow streets.



PTO: Standard model without engine uses the PTO of the tractor and there is no additional fuel consumption. Any kind of tractor with 33 KW engine is sufficient to trail the machine. The connection between machine and tractor can be done quickly.



Self-Powered Model: Optionally, self engine model allows our partners to use forklifts, pickups, or other vehicles to trail the machine if the tractor is not available on hand. Additional engine room including 23, 8 KW engine with 50 lt fuel tank is located on the rear of the sweeper.



TOWED TYPE SWEEPERS

Certified & Customized Solutions



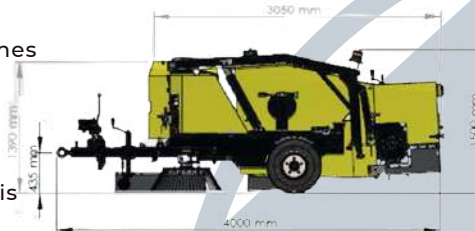
General Features

- Tractor towed mechanical sweepers offer the optimum balance among high performance, quality, low cost, and environmental impact.
- The Mechanical Sweeper is capable of sweeping and collecting sand, stones, and other debris with a 2 m³ ideal capacity.
- It loads waste material quickly and directly from the road into its own hopper.
- Towed-type road & street sweepers standard model without an engine uses the PTO of the tractor and there is no additional fuel consumption.
- Any kind of tractor with a 33 KW engine is sufficient to trail the machine. The connection between machine and tractor can be done within seconds.
- High-Pressure Washing Gun: A washing gun equipped with the machine can be used for cleaning the machine, irrigation of trees and plants, washing the pavements, or for agricultural disinfection purposes by using special chemicals.

WASTE MANAGEMENT SIMPLIFIED!

Technical Specifications

- Hydraulically actuated heavy-duty brushes with ideal dimensions effectively collect debris from the road to the hopper. The down pressure of the brushes can be adjusted for extending product life.
- The tractor towed mechanical sweeper is equipped with pulverized water spraying system in order to prevent dust. Waste is humidified at the correct stage. If the water tank is constructed of galvanized material.
- Waste discharging is carried out hydraulically by the pendant control unit. Its hopper is designed to enable the discharge of debris into any waste container available nearby. No need to transport wastes to waste disposal areas. Any waste container nearby is good enough to discharge the towed type street sweeper.



Easy to Maintain: If needs less components comparing with other sweeper models. All critical controls are contained in one area. The ease of access to this equipment aids diagnostic checks quickly. Due to compact design of the subgroup, it is very easy to change the brushes, and to clean jet nozzles, and water filter.



Easy to Control: Ergonomic and user friendly pendant control unit connected via a flexible cable allows the driver both to run all the sweeping functions inside the tractor cabin and to drive the tractor simultaneously. The mechanical sweeper is very simple to use. Operator can run the functions after one hour training.



TOWED TYPE SWEEPERS

Certified & Customized Solutions



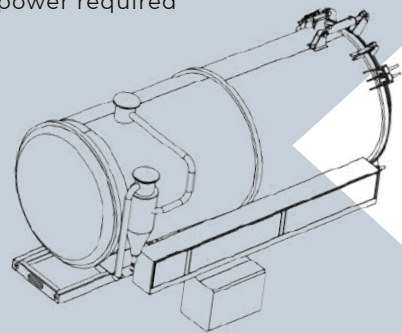
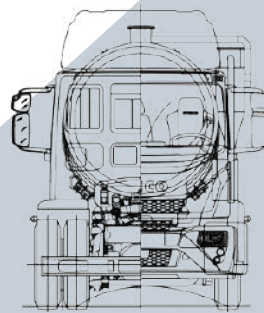
WASTE MANAGEMENT SIMPLIFIED!



Vacuum Trucks

Vacuum trucks or tankers use the power of vacuuming to do the suction process on sludge and liquids into the tank. The vacuum pump is powered by the PTO (power take-off) coupled to the vehicle gearbox.

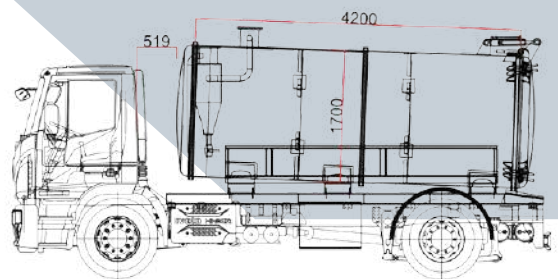
- Water Capacity
- Vacuum Pump
- Tank Material
- Main Hose Reel
- Rear Cover Opening
- Rear Door Locks
- Cabinets
- Valves
- Vehicle Capacity Referred
- Jurop / Moro / Battioni Pagani brands accordingly with power required
- Carbon Steel ST52 or Equivalent
- 3/4" diameter hose for the desired length
- Hydraulic / Mechanical
- Hydraulic / Mechanical
- 2 on both sides of the tank - customizable
- 4" Mechanical Filling 6" pneumatic discharge / or desired specs required



Vacuum Pump



- Some Applications for Q Series Blower
- Pneumatic transport of granular materials with dilute phase (vacuum)
- Your Projects-Canva
- Central dust collection systems (vacuum)
- Central milking machines (vacuum)
- Central vacuum applications (vacuum)
- On-board equipment applications (Sewer truck) (vacuum)



General Features

Usage Areas

- Cleaning of solid and liquid materials accumulated in city underground sewer pipeline
- Cleaning the sludge accumulated in subways and tunnels and pavement
- Suction and transport of industrial waste
- Suction and transport of chemical wastes
- Stainless Steel Tank
- Hydraulic Tank Lifting
- Pneumatic Suction Valve
- Pneumatic Drain Valve
- Hydraulic Tailgate Locks
- Hydraulic - Electric Crane
- Tank Discharge with Pressure



VACUUM TRUCKS

Certified & Customized Solutions





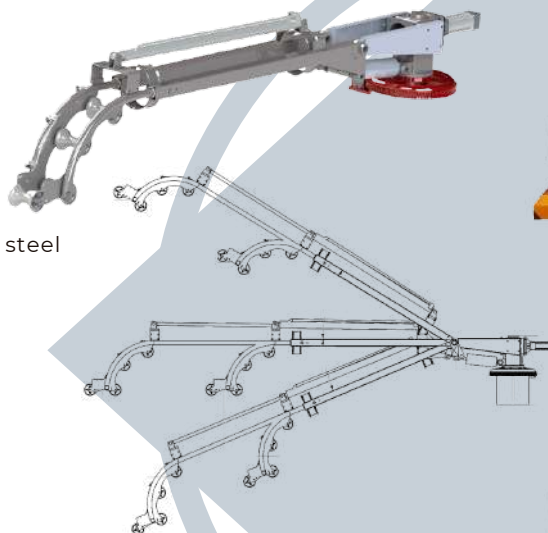
**Pro
Compactor**

**WASTE
MANAGEMENT
SIMPLIFIED!**

Technical Specifications

Optional Accessories

- Rotatable 270° Suction boom
- Hose drum Cassette type
- Stainless Steel Tank
- Additional water tank made of stainless steel
- Hydraulic tailgate locks
- Hydraulic – Electric crane
- Tank discharge with pressure
- Auxiliary Hose Reel
- Hydraulic tank tipping (lifting option)
- Pneumatic suction valve



Split Box - Transfer Case



- 3000 KGM Horizontal Heavy Duty PTO designed with the Clutch Mechanism and to provide Hot Shift Feature. With a clutch mechanism no need to press the clutch pedal during Engage/Disengage process.
- UARA.2400 takes power from the main shaft to make equipment function.



**VACUUM
TRUCKS**

Certified &
Customized
Solutions

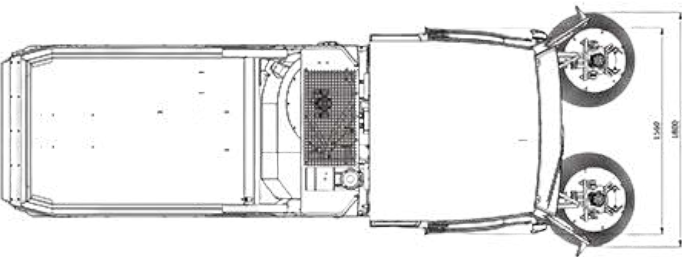


WASTE MANAGEMENT SIMPLIFIED!



Compact Road Sweepers 1.5m³

- Tire Size 6.5 L10
- Wheel Base 1430 mm
- Discharge Height 1600 mm
- Discharge Angle 50 ° ± 5 °
- Filter Surface Area 0,5 m²
- Pressure Washers 16 lt / 100 bar (high pressure pump)
- Hydraulic Suction Filter 100 micron
- Hydraulic Spinning Filter 10 - 25 micron
- Garbage Hopper Structure AISI 304 L Stainless Steel
- Cabin Structure Ergonomic cabin, Single seat, Air conditioning
- Camera Front and Rear Camera Control System Standard- Included
- Audio Radio and CD player Standard- Included
- Steering Wheel Adjustable Telescopic Power Steering Standard- Included
- Maneuvering - Traction Two-wheel maneuver, 4x2
- Sweeping speed 15 km / h
- Cruise Speed 25 km / h
- Brake Hydraulic type front and rear dynamic brake system
- Climbing Angle % 25



COMPACT SWEEPERS

Certified & Customized Solutions



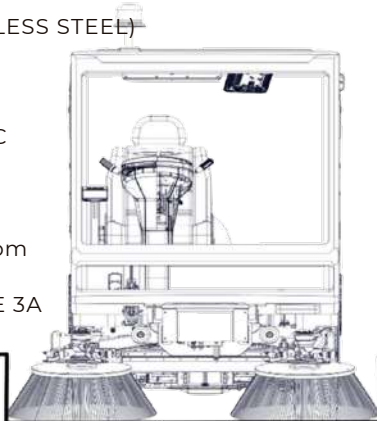
General Features

CAPACITY INFORMATION

- Nominal Container Capacity 2 m³
- Loading Volume 1,5 m³
- Loading Capacity 1 Ton
- Water Tank 300 Liter (STAINLESS STEEL)
- Hydraulic Tank 130 Liter

ENGINE INFORMATION

- Brand - Model TUMOSAN 4DT-39I-175C
- Engine Capacity 3,9 LT (liter)
- Number of Cylinders 4
- Type Water Cooling TURBO
- Power 75 HP/56 KW@2.300 rpm
- Torque 295 Nm@1.500 rpm
- Emission EPA TIER 3 / EU STAGE 3A
- Working Cycle 1600 / 1800 rpm



WASTE MANAGEMENT SIMPLIFIED!



WASTE MANAGEMENT SIMPLIFIED!

Technical Specifications

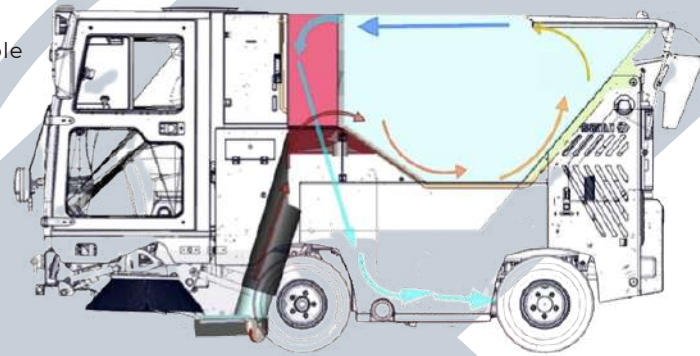
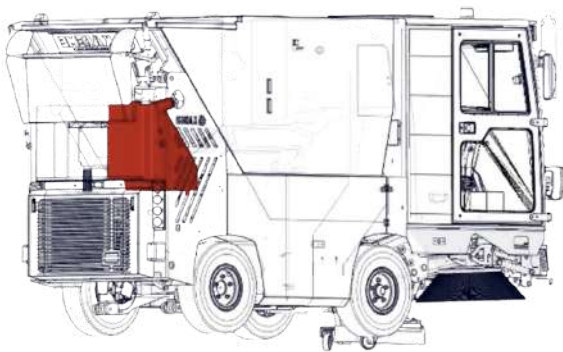
WASTE MANAGEMENT SIMPLIFIED!

SWEEPING EQUIPMENTS

- Side Brush Ø400 mm - 0- 150 rpm Adjustable
- Vacuum Entry Pipe Diameter Ø200 mm
- Vacuum Entry Pipe Width 650 x 400 mm
- Sweeping (cleaning) width 1.500 mm

FAN

- Type Dynamic balance adjusted and Rust-resistant heavy-duty fan
- Feature Silenced and high performance fan
- Design 3.500 / 3.600 rpm
- Fan Working Cycle 8.250 m³ / h
- Fan Flow Rate Stainless Steel (AISI304)
- Structure



CONTROL PANEL

- | | |
|-----------------------------------|--------------------|
| • Water tank level indicator | Standard- Included |
| • Fuel tank level indicator | Standard- Included |
| • Hydraulic tank level warning | Standard- Included |
| • Engine Cycle indicator | Standard- Included |
| • Sweeper Brushes adjustment knob | Standard- Included |

CAMERA SYSTEM

- | | |
|----------------------------|--------------------|
| • 7 Inch screen | Standard- Included |
| • Rear Camera | Standard- Included |
| • Vacuum Pipe entry camera | Standard- Included |

OPTIONAL FEATURES (Additional charge)

- | | |
|------------------------------------|----------|
| • 4 meters long rear traction hose | Optional |
| • Snow Blade | Optional |
| • Snow Sweeper Brush | Optional |
| • Additional 3rd Brush | Optional |

COMPACT SWEEPERS

Certified & Customized Solutions





**NEW
ERA IN**

**WASTE
MANAGEMENT**



Certified &
Customized
Solutions

CONTACT

Office : 35800 Aliağa/İzmir Turkey

Factory: Evrenköy Cd. 42250/Konya, Turkey



www.procompactor.com

info@procompactor.com